

PRINTFILES:

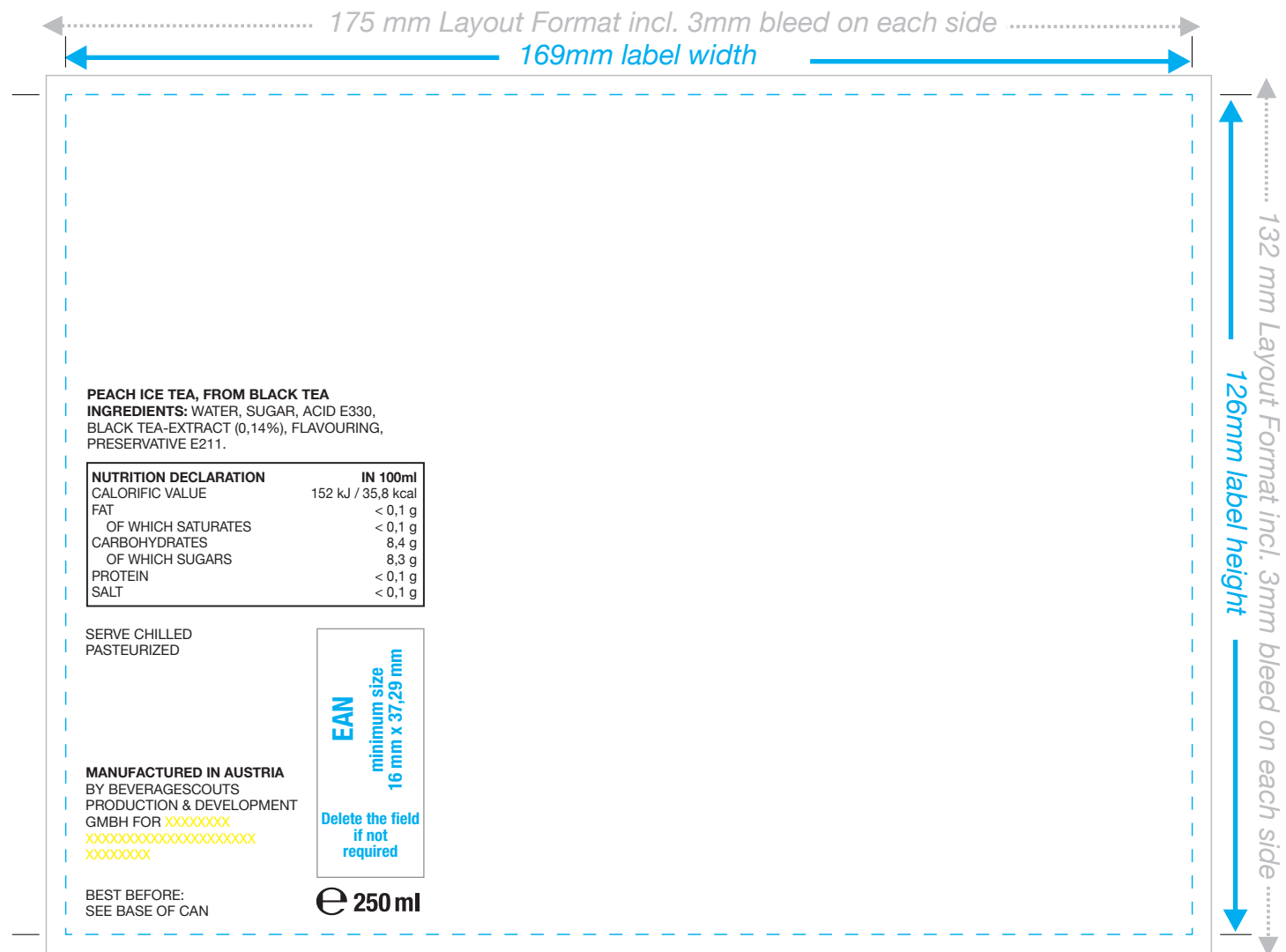
FOR A **MAXIMUM PRINTING QUALITY** PLEASE SEND YOUR DATA IN PDF-FILE FORMAT. MAKE SURE, COLOURS ARE IN "CMYK"-COLOUR CODE. ALL TEXT, LOGOS AND PICTURES MUST BE CONVERTED TO PATHS. **MINIMUM TEXT SIZE FOR PRODUCT RELEVANT INFORMATION IS 1,2 mm ACCORDING TO EU LABELLING REQUIREMENTS.**

DELIVERY OF PRINT DATA:

THE FINISH CAN BE **GLOSSY** OR **MATT**. PLEASE SPECIFY THIS USING THE FILE NAME AS FOLLOWS:
 "LAYOUT_NAME_FINISH (E.G. MATT)_DATE"
 THE GENERAL REQUIREMENTS FOR PDF FILES APPLY. IF YOU SEND OPEN FILES, ALWAYS INCLUDE FONTS AND PICTURES!

BeverageScouts
 production & development GmbH
 Kaplanstraße 16
 A-2020 Hollabrunn
 office@beveragescouts.com
 Tel. +43 2952 36063

Status 12/2018



print format 250 ml: b 169 mm x h 129 mm	--- print range	XXXXXX Place for customer address	TEXT 2 mm safety distance text to edge
---	-----------------	--------------------------------------	---